



PKP Process Instruments Inc

10 Brent Drive

Hudson, MA 01749

Tel: +1-978-212-0006

Fax: +1-978-568-0060

PKP Prozessmesstechnik GmbH

Borsigstrasse 24

D-65205 Wiesbaden-Nordenstadt

Tel: 06122 / 7055 - 0

Fax: 06122 / 7055 - 50

Operating Instructions

DG02

Flow Indicator

Contents

1 Introduction	2
2 Safety Information	2
3 Functional description	2
4 Specifications	See data sheet in the appendix

1 Introduction

Series DG02 flow indicators are noted for their reliable function and easy operation. To obtain the greatest benefit from this device, please observe the following cautionary statement:

Persons who are responsible for setting up or operating this device must be sure to read the and understand the operating instructions and the safety information pertaining to it.

2 Safety Information

2.1 General Instructions

To ensure safe operation, the device must only be operated according to the information in the operating instructions. When the device is in use, the regulations and safety standards applicable to the specific application must also be observed. This statement also applies to the use of accessories.

2.2 Proper Usage

Series DG02 flow indicators are designed to monitor the flow from liquids.

Any application extending beyond this specific intended use does not constitute proper usage. Series DG02 flow indicators must not be employed as the sole means of avoiding hazardous conditions in machinery and installations.

The machinery and installations must be designed in such a manner that faulty conditions and malfunctions will not present hazardous situations for operating personnel.

2.3 Qualified Personnel

Series DG02 flow indicators must only be used by qualified, knowledgeable personnel trained in correct use of these devices. Qualified personnel are those persons familiar with setting up and assembling these devices, placing them in service and operating them. In addition, such personnel must also be qualified to perform the work associated with the application for which the device is being used.

3 Functional Description

The DG02 is a mechanical flow indicator for liquids for quantitative flow indication. The rotor, which is arranged in a dome for good visibility, provides a directly flow-proportional indication of the actual flow rate.

DG02

Rotor-Type Flow Indicator

- Sturdy, robust design
- Available in red bronze or stainless steel
- Resistant to high heat



Description:

The DG02 mechanical flow indicator is used for visual verification of liquid flow. The rotational speed of the rotor is proportional to the liquid flow rate. The domed sight glass allows the rotor to be easily seen at any time. These devices are made of high-quality materials, allowing them to be used with a great variety of liquids.

Typical Applications:

DG02 mechanical flow indicators are used to monitor the flow of liquids of low to medium viscosity in pipe systems.

Models:

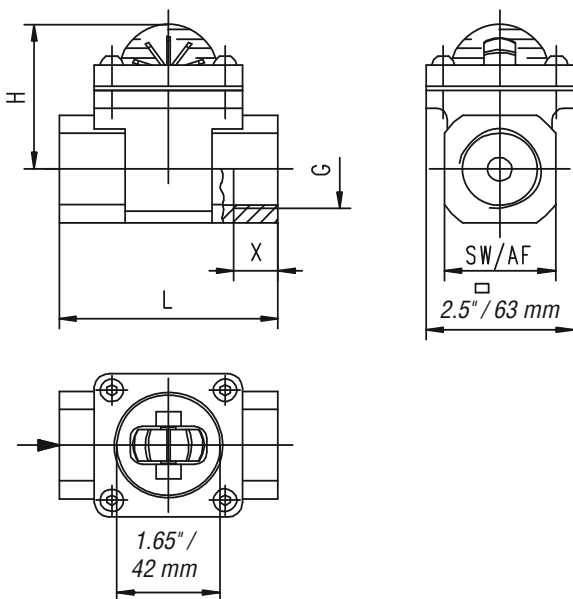
Materials: Red bronze or stainless steel

Flow Rates:

NPT / G	Pmax. (psi / bar)	Qmax GPM / l/min water	Rotor Start l/min water
1/4"	232 / 16	7.9 / 30	0.18 / 0.7
3/8"	232 / 16	10.5 / 40	0.21 / 0.8
1/2"	232 / 16	14.5 / 55	0.26 / 1.0
3/4"	232 / 16	24 / 90	0.32 / 1.2
1"	232 / 16	37 / 140	0.40 / 1.5

Dimensions:

NPT / G	L in inch / mm	H in inch / mm	X in inch / mm	Weight in lbs / kg
1/4"	3 / 76	2 / 53	0.47 / 12	1.54 / 0.70
3/8"	3 / 76	2 / 53	0.63 / 16	1.43 / 0.65
1/2"	3 / 76	2 / 53	0.55 / 14	1.43 / 0.65
3/4"	3.5 / 89	2.6 / 66	0.71 / 18	2.75 / 1.25
1"	3.5 / 89	2.6 / 66	0.71 / 18	2.64 / 1.20



Model Key:

Order Number: DG02. R. 10. 0

Rotor-Type Flow Indicator

Materials:

R = Red bronze
E = Stainless steel

Connections:

08N = 1/4" NPT 08 = G 1/4
10N = 3/8" NPT 10 = G 3/8
15N = 1/2" NPT 15 = G 1/2
20N = 3/4" NPT 20 = G 3/4
25N = 1" NPT 25 = G 1

Special features:

0 = None
1 = Please specify in writing.

Technical Specifications:

Max. pressure: 232 psi / 16 bar
Pressure loss: 0.73 psi / 0.05 bar at Qmax.
Max. temperature: 392 °F / 200 °C

Materials:

DG02.R:
Housing: Red bronze
Housing cover: Brass
Sight glass: Borosilicate glass
Pins: Stainless steel
Rotor: PPS
Gasket: Klingersil C-4400

DG02.E:
Housing: Stainless steel
Housing cover: Stainless steel
Sight glass: Borosilicate glass
Pins: Stainless steel
Rotor: PPS
Gasket: Klingersil C-4400

Installation position:

This device is only of limited suitability for downward vertical flows; otherwise, it may be installed in any position.

PKP Prozessmesstechnik GmbH

Borsigstraße 24 · D-65205 Wiesbaden
+49 (0) 6122-7055-0 · +49 (0) 6122-7055-50
Email: info@pkp.de · Internet: www.pkp.de

PKP Process Instruments Inc.

10 Brent Drive · Hudson, MA 01749
+1-978-212-0006 · +1-978-568-0060
Email: info@pkp.eu · Internet: www.pkp.eu

